

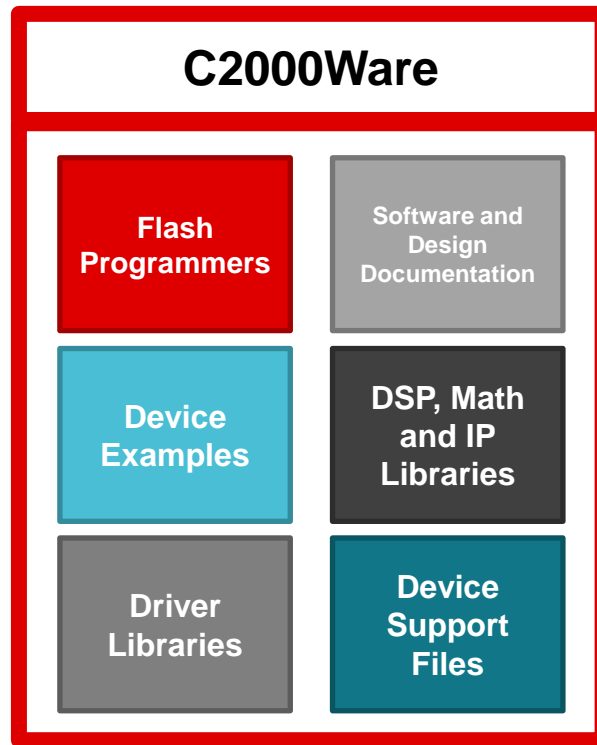
Introduction to C2000Ware

Chris Chiarella

C2000 System Software

What is C2000Ware?

- C2000's foundational development software and documentation package
- Supports Piccolo, Delfino, and future devices
- Getting started, usage, and design documentation
- Includes the latest device-specific:
 - Examples
 - Support Files
 - System and Peripherals Driver Library
- DSP, Math and IP Libraries
- Useful utilities - Flash Programmers



How to access C2000Ware

- Available to download at www.ti.com
- Browse the package via TI Resource Explorer
 - dev.ti.com/tirex
 - Code Composer Studio (v7.0 and newer)



TI Home > Semiconductors > Design resources > C2000Ware for C2000 MCUs

C2000Ware for C2000 MCUs

C2000WARE

[Description & Features](#) [Technical documentation](#) [Support & Training](#) [Order Now](#)

Order Now

Part Number	Buy from Texas Instruments or Third Party	Alert Me	Status	Current Version	Version Date	Description
C2000WARE: C2000Ware for C2000 Microcontrollers	Get software	Alert Me	ACTIVE	V3.03.00.00	07-OCT-2020	
C2000WARE-CLOUD: C2000Ware on TI Resource Explorer Cloud	Free Start development	Alert Me	ACTIVE			C2000Ware on TI Resource Explorer Cloud

TI DevTools | Explore | Develop | Help

Start browsing

Welcome to the TI development portal for embedded processors!

Access our cloud tools to develop applications and to evaluate TI devices.

For the best experience, please install the [TI Cloud Agent](#) extension so we can detect your device.

Develop online

TI has an extensive set of cloud tools that allow you to start developing immediately online.

[Create project online](#)

Develop on desktop

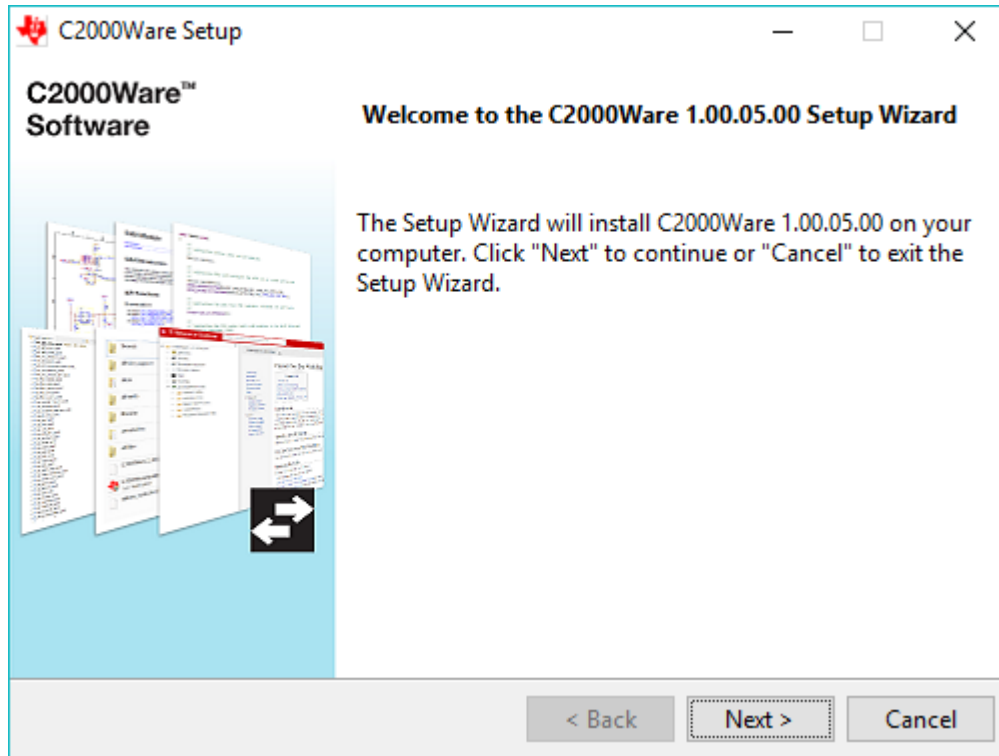
Browse our professional desktop tools including Code Composer Studio™

[Download tools](#)

Should I use cloud or desktop tools?

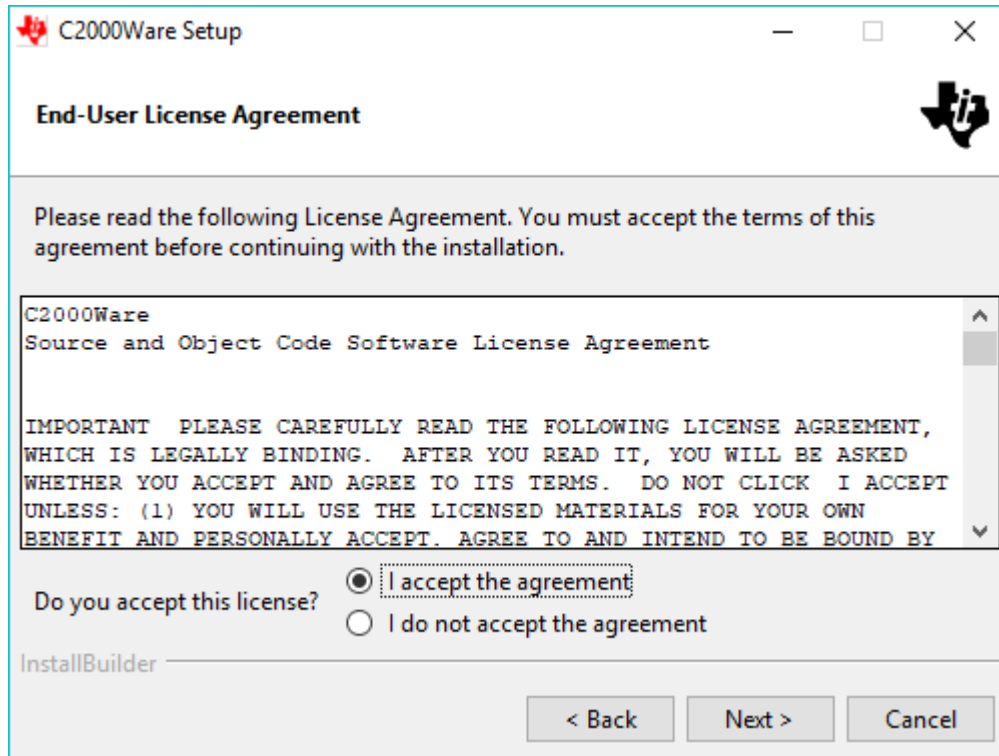
Installing C2000Ware

1. **Start installer**
2. Accept license agreement
3. Choose installation location (default is recommended)
4. Confirm and continue
5. Wait for installation to complete
6. C2000Ware is installed!



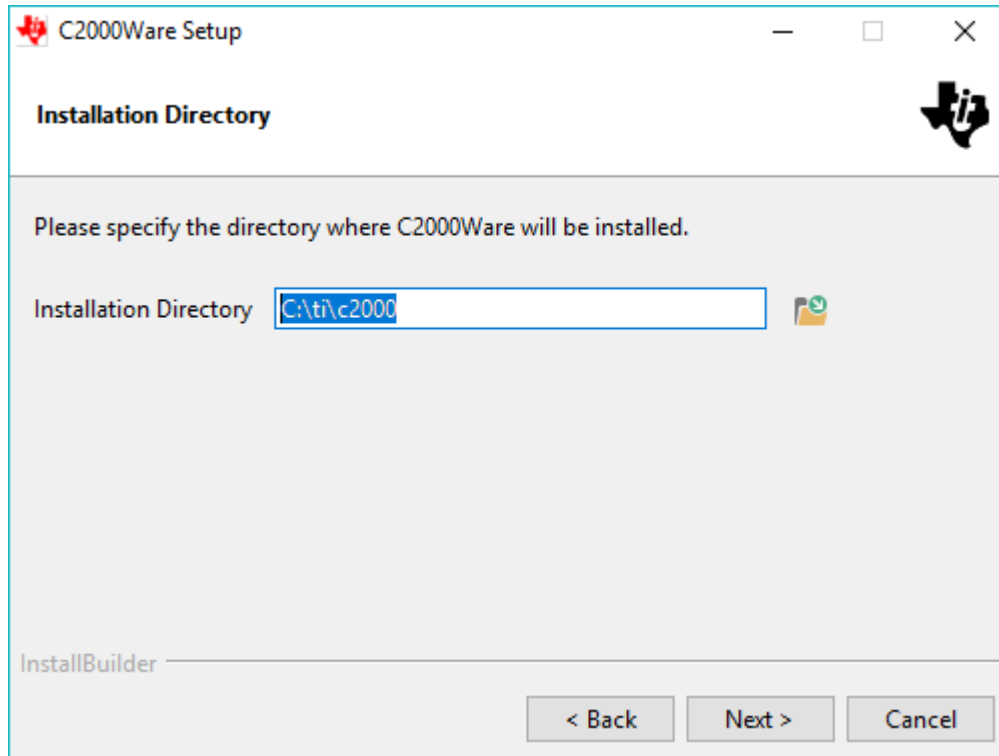
Installing C2000Ware

1. Start installer
2. **Accept license agreement**
3. Choose installation location (default is recommended)
4. Confirm and continue
5. Wait for installation to complete
6. C2000Ware is installed!



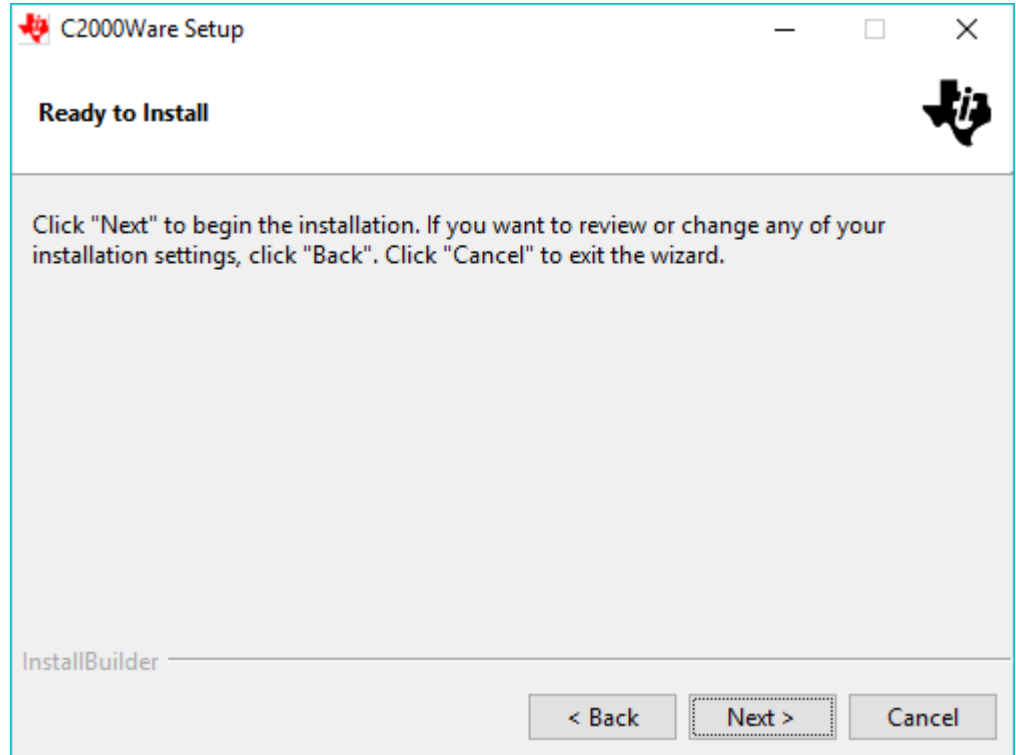
Installing C2000Ware

1. Start installer
2. Accept license agreement
- 3. Choose installation location (default is recommended)**
4. Confirm and continue
5. Wait for installation to complete
6. C2000Ware is installed!



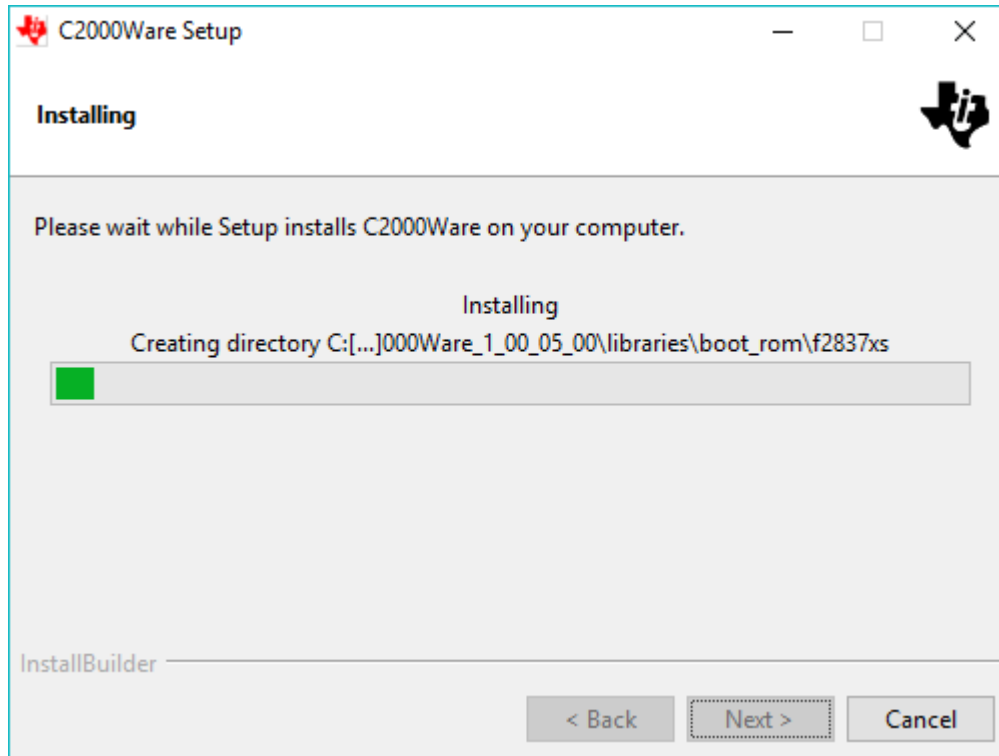
Installing C2000Ware

1. Start installer
2. Accept license agreement
3. Choose installation location (default is recommended)
- 4. Confirm and continue**
5. Wait for installation to complete
6. C2000Ware is installed!



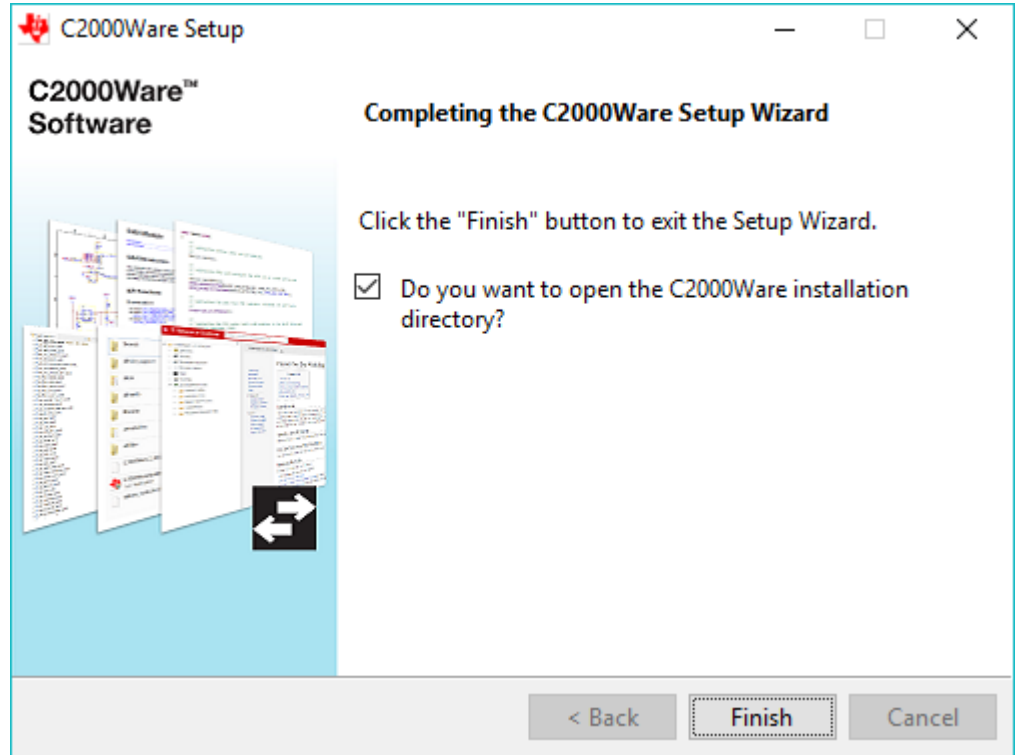
Installing C2000Ware

1. Start installer
2. Accept license agreement
3. Choose installation location (default is recommended)
4. Confirm and continue
- 5. Wait for installation to complete**
6. C2000Ware is installed!



Installing C2000Ware

1. Start installer
2. Accept license agreement
3. Choose installation location (default is recommended)
4. Confirm and continue
5. Wait for installation to complete
6. **C2000Ware is installed!**



C2000Ware Contents and Directories



.metadata



driverlib



boards



libraries



device_support



uninstallers



docs



utilities

C2000Ware Contents and Directories



.metadata

Contains files required
for Resource Explorer

<input type="checkbox"/> Name	Date modified	Type
<input type="checkbox"/> Documentation.content.tirex.json	10/4/2020 4:54 AM	JSON File
<input type="checkbox"/> ETHERCAT.chinese.content.tirex.json	10/4/2020 4:54 AM	JSON File
<input type="checkbox"/> ETHERCAT.content.tirex.json	10/4/2020 4:54 AM	JSON File
<input type="checkbox"/> ETHERNET.chinese.content.tirex.json	10/4/2020 4:54 AM	JSON File
<input type="checkbox"/> ETHERNET.content.tirex.json	10/4/2020 4:54 AM	JSON File
<input type="checkbox"/> Examples.chinese.content.tirex.json	10/4/2020 4:54 AM	JSON File
<input type="checkbox"/> Examples.content.tirex.json	10/4/2020 4:54 AM	JSON File
<input type="checkbox"/> F2802x.chinese.content.tirex.json	10/4/2020 4:54 AM	JSON File
<input type="checkbox"/> F2802x.content.tirex.json	10/4/2020 4:54 AM	JSON File
<input type="checkbox"/> F2802x0.chinese.content.tirex.json	10/4/2020 4:54 AM	JSON File
<input type="checkbox"/> F2802x0.content.tirex.json	10/4/2020 4:54 AM	JSON File
<input type="checkbox"/> F2803x.chinese.content.tirex.json	10/4/2020 4:54 AM	JSON File
<input type="checkbox"/> F2803x.content.tirex.json	10/4/2020 4:54 AM	JSON File
<input type="checkbox"/> F2805x.chinese.content.tirex.json	10/4/2020 4:54 AM	JSON File
<input type="checkbox"/> F2805x.content.tirex.json	10/4/2020 4:54 AM	JSON File
<input type="checkbox"/> F2806x.chinese.content.tirex.json	10/4/2020 4:54 AM	JSON File
<input type="checkbox"/> F2806x.content.tirex.json	10/4/2020 4:54 AM	JSON File
<input type="checkbox"/> F2807x.chinese.content.tirex.json	10/4/2020 4:54 AM	JSON File
<input type="checkbox"/> F2807x.content.tirex.json	10/4/2020 4:54 AM	JSON File
<input type="checkbox"/> F2823x.chinese.content.tirex.json	10/4/2020 4:54 AM	JSON File
<input type="checkbox"/> F2823x.content.tirex.json	10/4/2020 4:54 AM	JSON File

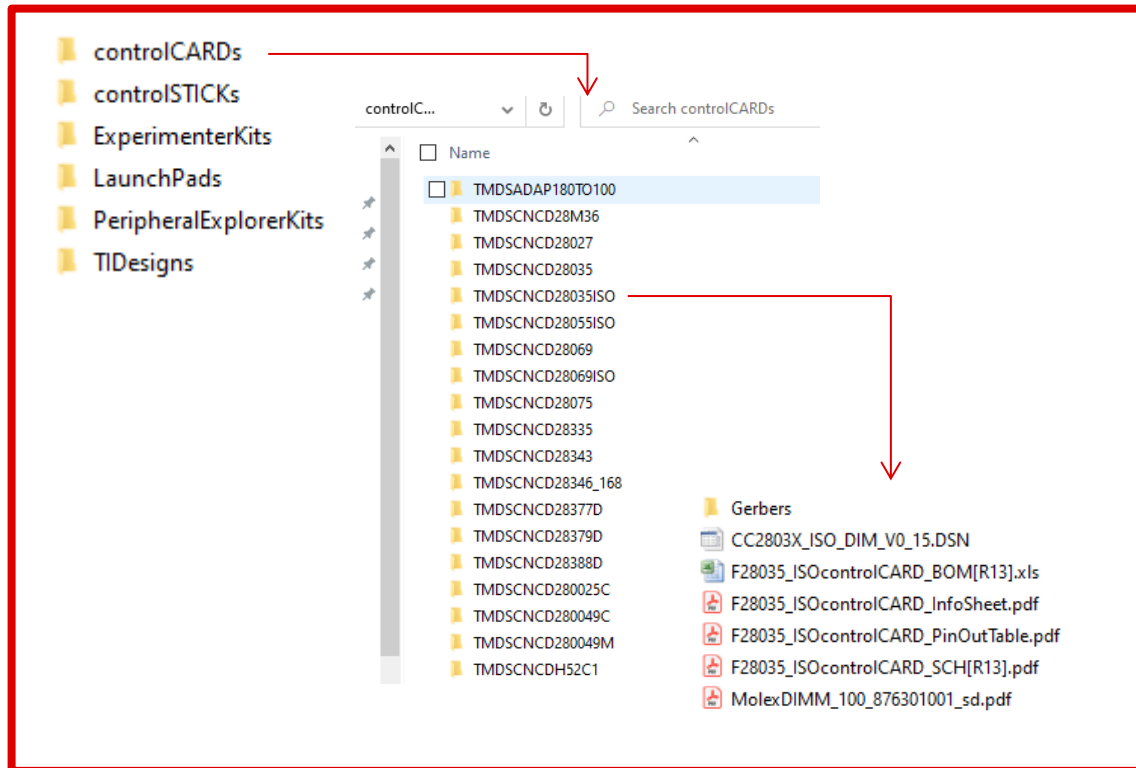
C2000Ware Contents and Directories



boards

Contains hardware design documents for:

- controlCards
- controlSticks
- Experimenter Kits
- LaunchPads
- Peripheral Explorer Kits



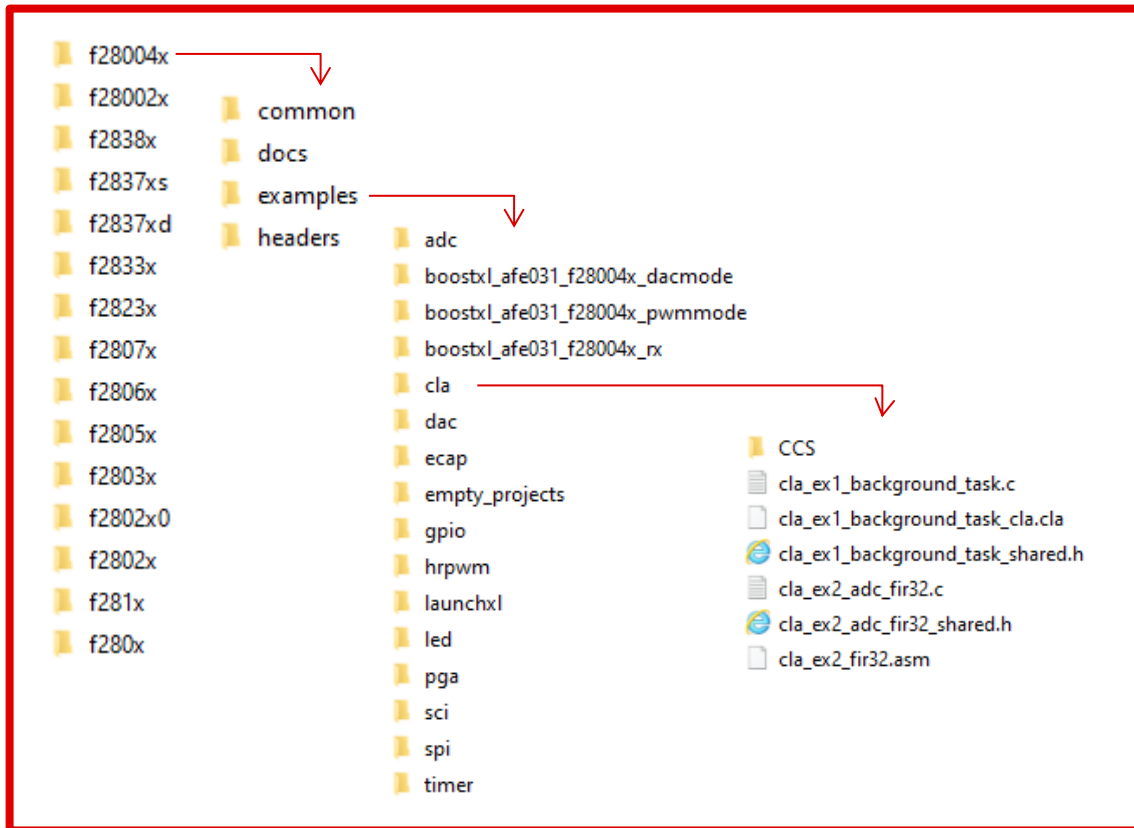
C2000Ware Contents and Directories



device_support

Contains device development files and examples including:

- Software documentation
- Memory linker files
- Device setup files
- Bit field headers
- Examples using bit field headers



C2000Ware Contents and Directories



docs

Contains package documentation including:

- C2000Ware quickstart guide
- ControlSUITE to C2000Ware transition guide
- C2000Ware documentation index

- c28x_context_save_restore
- c28x_interrupt_faq
- c28x_interrupt_nesting
- c2000Ware_quickstart_guide
- c2000Ware_documentation.html
- controlSUITE_to_c2000Ware_guide.pdf

C2000Ware 3.03.00.00

Table of Contents

- Introduction
- Documentation
 - Example Projects Quickstart Guides
 - Boards
 - Devices
 - Libraries
- Reference Articles

Introduction

This is version 3.03.00.00 of C2000Ware. This HTML will provide an index of documentation for devices, boards, boot loaders, and libraries.

Documentation

Example Projects Quickstart Guides

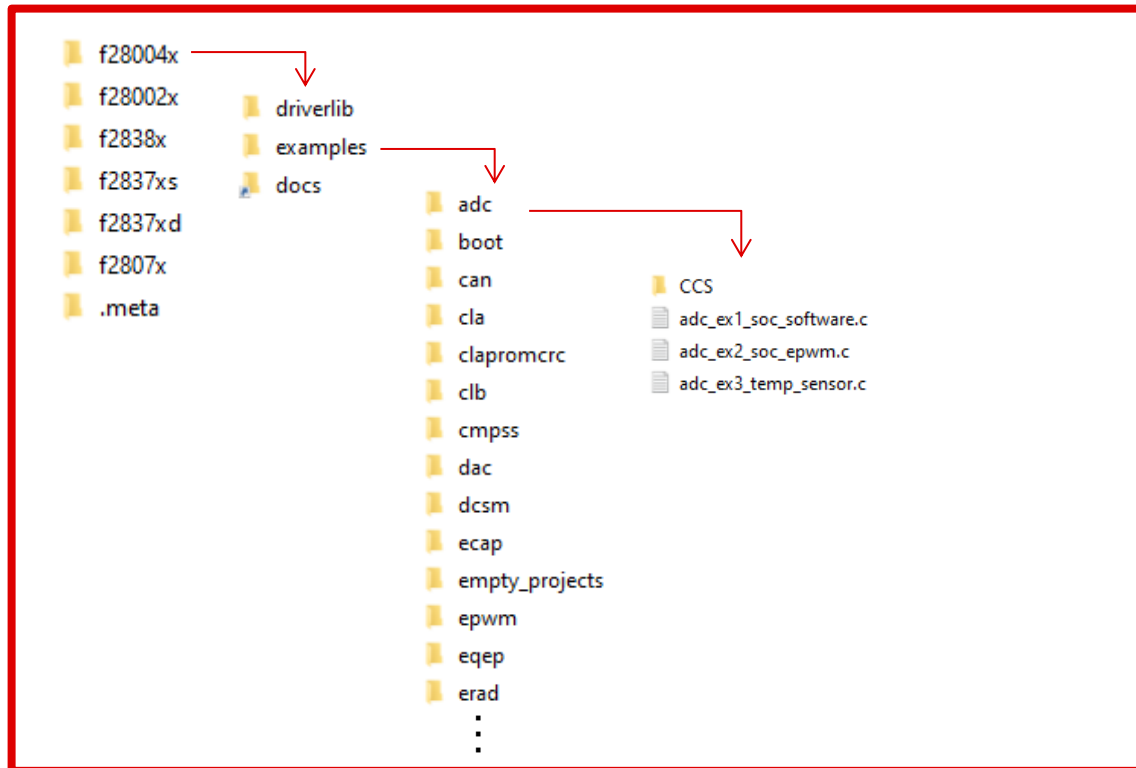
Device	Description	Documentation
f28002x	f28002x documentation	Example_Projects_Quickstart_Guide
f2837xd	f2837xd documentation	Example_Projects_Quickstart_Guide
f2807x	f2807x documentation	Example_Projects_Quickstart_Guide
f2838x	f2838x documentation	Example_Projects_Quickstart_Guide
f2837xs	f2837xs documentation	Example_Projects_Quickstart_Guide
f28004x	f28004x documentation	Example_Projects_Quickstart_Guide

C2000Ware Contents and Directories



driverlib

Contains the device system and peripheral driver libraries and examples



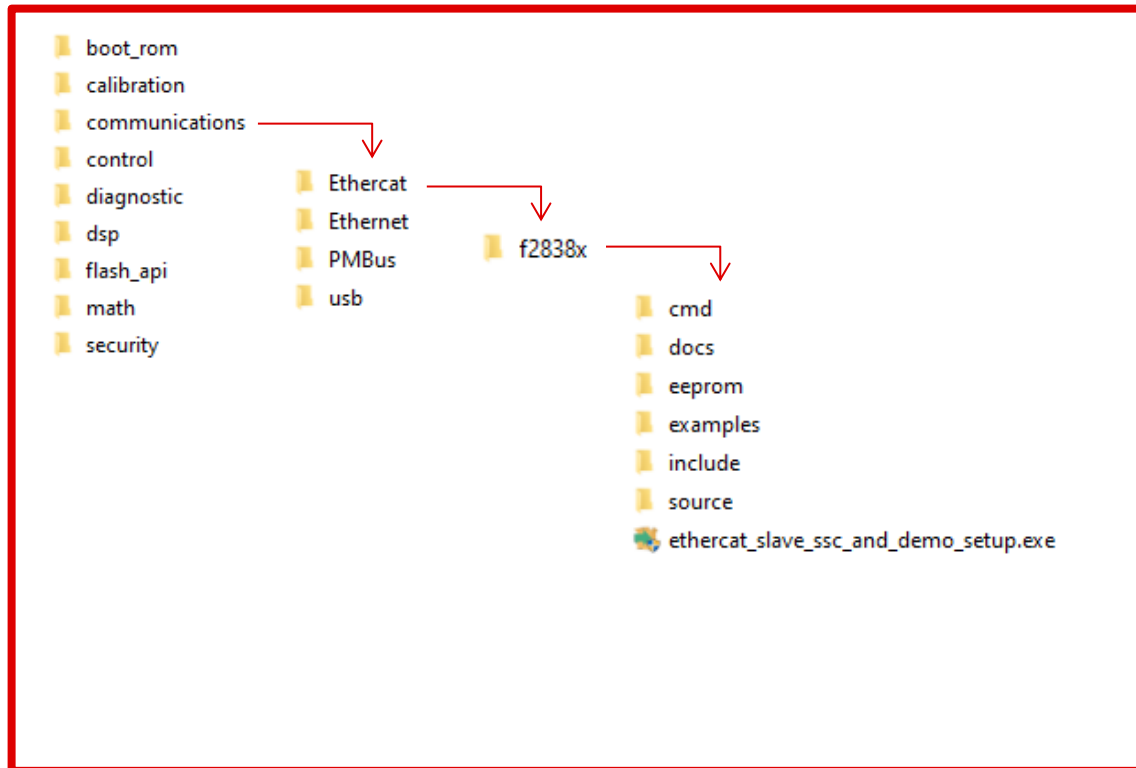
C2000Ware Contents and Directories



libraries

Contains various libraries including:

- Boot code
- Communications
- Digital control
- Accelerator (FPU, VCU, etc)
- Math
- Flash

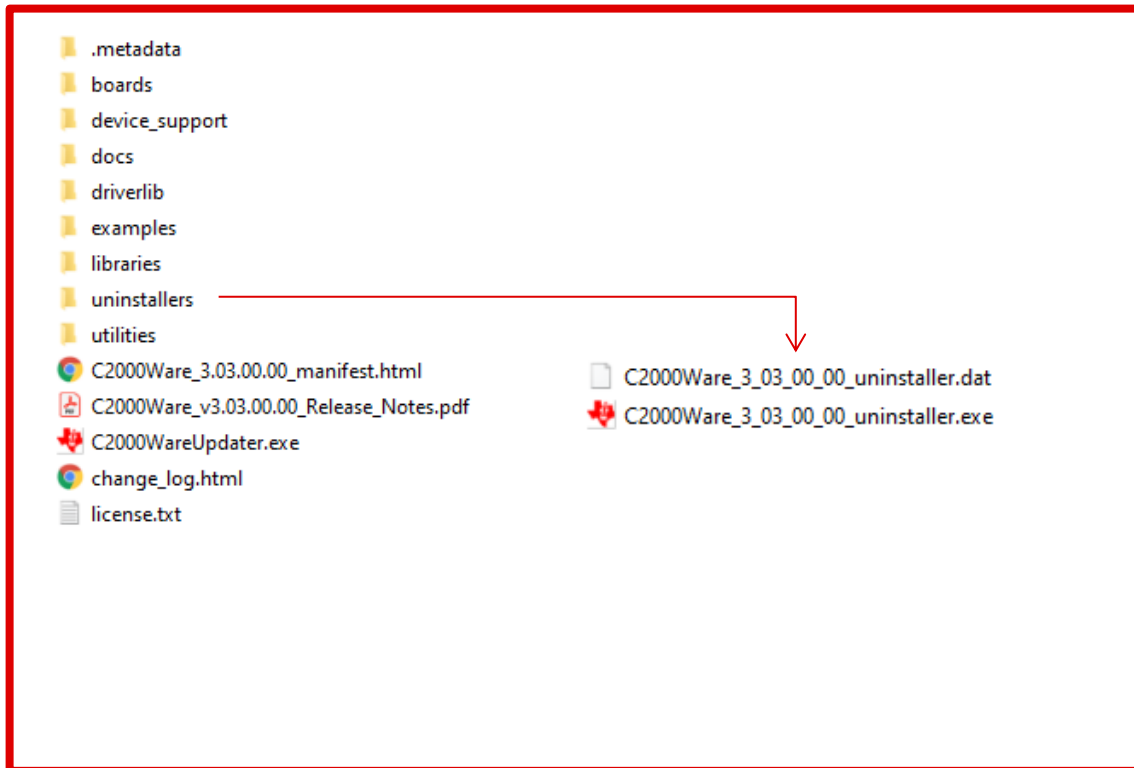


C2000Ware Contents and Directories



uninstallers

Contains the executable to uninstall C2000Ware



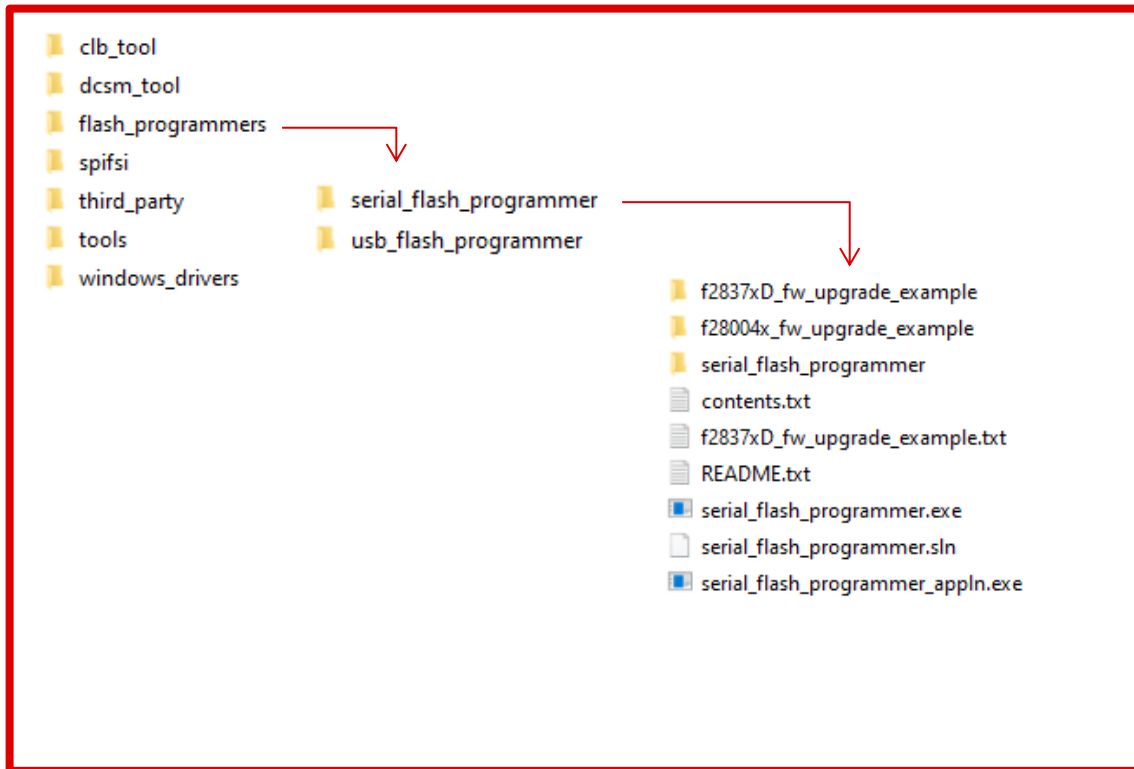
C2000Ware Contents and Directories



utilities

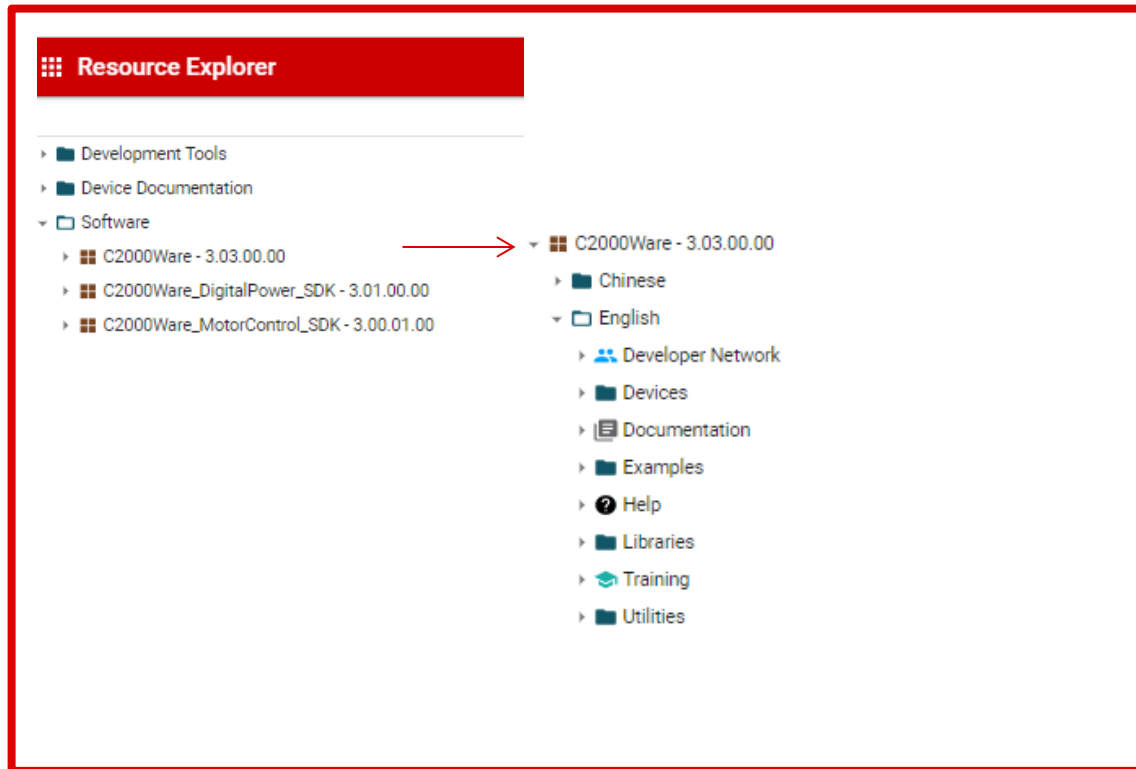
Contains assortment of utilities including:

- Flash programmers
- Third party software
- Windows drivers
- Various tools



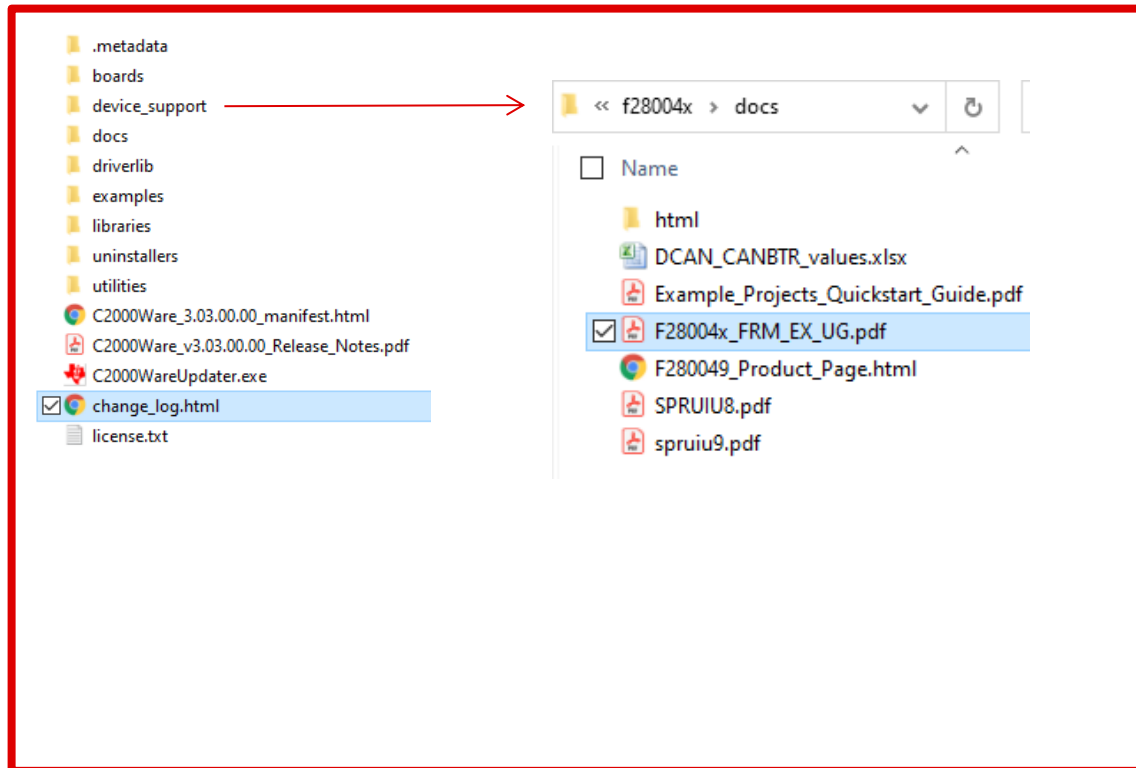
C2000Ware Resource Explorer

- Accessible from Code Composer Studio or dev.ti.com
- Browse any version of C2000Ware
- View documentation, examples, and more
- Import examples into CCS Cloud



Tips for using C2000Ware

- Use release notes to get latest details on what's new
- Refer to the device firmware development user's guides
- Find documents using the C2000Ware documentation index
- Run the C2000Ware Updater to check for new versions



Check out C2000Ware Today!

www.ti.com/tool/C2000WARE